

**PRESS RELEASE**

May 2024

**Process sequence under control****Webinars for more productivity in injection molding**

**With a new webinar series, WITTMANN trains users in cycle sequence programming. This series targets contract injection molders who are constantly required to adjust their production equipment to new challenges at short intervals.**

By investing just two hours of their time, webinar participants learn how to program many special functions on the basis of a standard process sequence and integrate them very quickly and easily via a touch operating panel into the sequence with the help of SmartEdit. Examples of such special functions are additional core pull sequences not covered by free core pull programming, activation of air valves, setting of delays or output signals for controlling an external cooling system.

**Minimizing setup times**

The visual, icon-based SmartEdit cycle sequence programming tool, included as standard in the equipment package of all WITTMANN injection molding machines with B8 control systems, makes it possible to compile a user-defined complete sequence from a sequence menu on the machine's display. The touch operation in combination with a drag-&-drop function makes it particularly easy to adjust the process sequence to the special requirements of each application. The process sequence is very clearly visualized in a node diagram. The sequence can be tested for plausibility in a dry run before being used in series production.

In this way, SmartEdit reduces the setup time, increases the availability of the injection molding machines and thus significantly boosts the productivity of injection molding processing.

**Reaching the goal takes no more than two hours**

All webinars take place during the morning from 8:30 to 10:30 h and are offered in German language. Experienced WITTMANN trainers introduce the subject and answer the participants' questions. The webinar fee is 200 Euros per company, regardless of how many persons from that company take part.

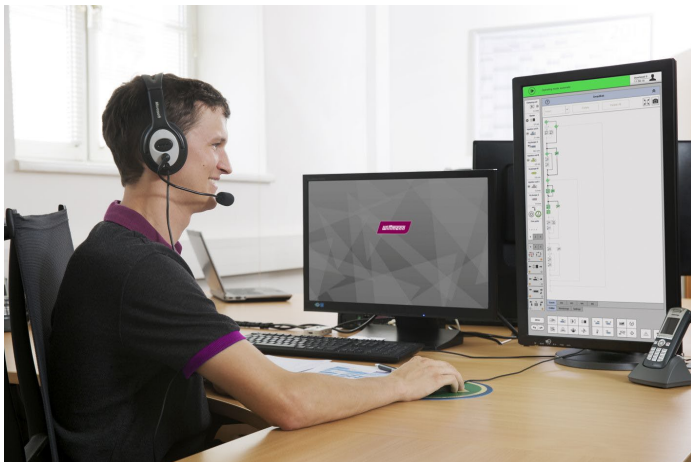
The next webinars take place on:

- June 10
- June 17
- June 20

Further dates will be announced on the WITTMANN website:

[Schulung | WITTMANN Group \(wittmann-group.com\)](https://www.wittmann-group.com/Schulung)

The WITTMANN team in Meinerzhagen, Germany, will be available for further information and registration via: [schulungen-meinerzhagen@wittmann-group.com](mailto:schulungen-meinerzhagen@wittmann-group.com).



**Fig.:** SmartEdit reduces the setup time and increases the availability of the injection molding machines. Webinar participants learn how to integrate special functions into the cycle sequence with the help of SmartEdit.

Photo: WITTMANN

## The WITTMANN Group

The WITTMANN Group is a globally leading manufacturer of injection molding machines, robots and auxiliary equipment for processing a great variety of plasticizable materials – both plastic and non-plastic. The group of companies has its headquarters in Vienna, Austria and consists of two main divisions: WITTMANN BATTENFELD and WITTMANN. Following the principles of environmental protection, conservation of resources and circular economy, the WITTMANN Group engages in state-of-the-art process technology for maximum energy efficiency in injection molding, and in processing standard materials and materials with a high content of recyclates and renewable raw materials. The products of the WITTMANN Group are designed for horizontal and vertical integration into a Smart Factory and can be interlinked to form an intelligent production cell.

The companies of the group jointly operate ten production plants in six countries, and the additional sales companies at their 36 different locations are present in all major industrial markets around the world.

WITTMANN BATTENFELD pursues the continued strengthening of its market position as a manufacturer of injection molding machines and supplier of comprehensive modern machine technology in modular design. The product range of WITTMANN includes robots and automation systems, material handling systems, dryers, gravimetric and volumetric blenders, granulators, temperature controllers and chillers. The combination of the individual areas under the umbrella of the WITTMANN Group enables perfect integration – to the advantage of injection molding processors with an increasing demand for seamless interlocking of processing machines, automation and auxiliaries.

### Contact:

#### **WITTMANN BATTENFELD Deutschland GmbH**

Werner-Battenfeld-Strasse 1

58540 Meinerzhagen

Germany

Tel.: +49 2354 72-0

[empfang@wittmann-group.com](mailto:empfang@wittmann-group.com)

[www.wittmann-group.com](http://www.wittmann-group.com)